



**Vault™**  
Top-mount/Under-mount Kitchen Sink  
**K-3839-1**

**Features**

- 36-inch minimum base cabinet width.
- 18-gauge stainless steel.
- Top-mount or under-mount.
- Large/medium bowls.
- Smart Divide® lowered divider.
- Single faucet hole
- Includes left bottom bowl rack.
- Includes installation hardware.
- Includes SilentShield® sound-absorption technology.
- 33" (838 mm) x 22" (559 mm).

**Optional Accessories**

K-6429 Utility Rack  
K-6432 Saddle Towel Bar  
K-6434 Saddle Utility Rack  
K-6647 Bottom Bowl Rack (for small bowl)  
K-6667 Wood Cutting Board  
K-8801-NBR Sink Strainer

**Components**

Product includes:  
1177160 Hardware Kit, Top-mount

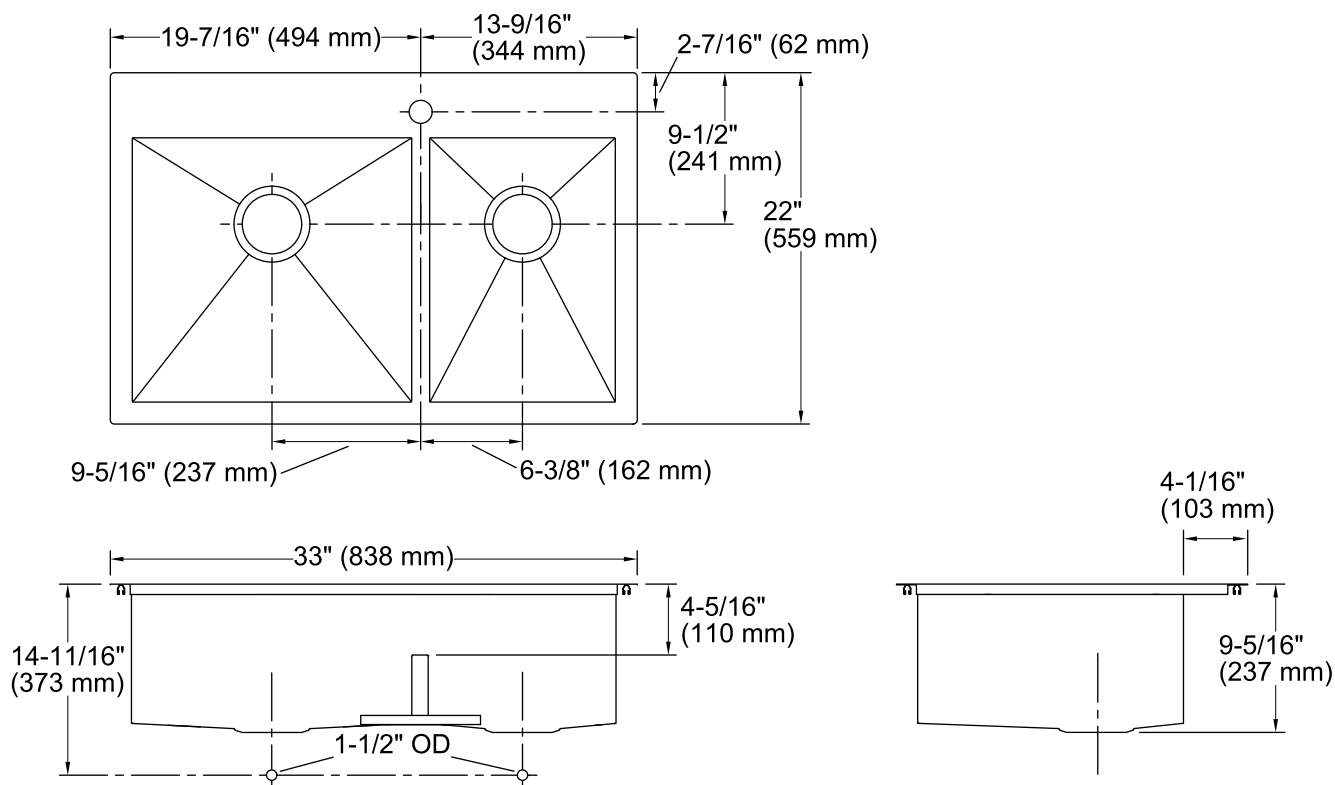


**Codes/Standards**

ASME A112.19.3/CSA B45.4

**Lifetime Limited Warranty for  
KOHLER® Stainless Steel Sinks**

See website for detailed warranty information.



### Technical Information

All product dimensions are nominal.

Bowl configuration: Offset

Installation: Top-mount, Under-mount

Bowl area (Left) Length: 17-1/2" (445 mm)

Width: 16-9/16" (420 mm)

Bowl depth: 9" (229 mm)

Water depth: 9" (229 mm)

Bowl area (Right) Length: 11-5/8" (295 mm)

Width: 16-9/16" (420 mm)

Bowl depth: 9" (229 mm)

Water depth: 9" (229 mm)

Number of deck holes: 1

Faucet hole(s): 1-7/16" (37 mm)

Drain hole: 3-3/4" (94 mm)

Template: 1130823-7, required, included

### Notes

Install this product according to the installation instructions.

Allow 3/4" (19 mm) clearance beyond the back of the bowl for the wood cutting board (optional accessory).