

# Zero Threshold Shower Bases SMFZS Center Drain

## Features

- Heavy Duty SMC Sheet Molding Compound Material
- Light weight. Natural stone effect.
- Bases can be custom sized within a range. See chart below
- 63" length bases or longer meet ADA requirements
- SMC color-matched drain cover conceals a conventional 2" shower drain (not supplied).
- Bases can be used as a Single, Double or Triple Threshold
- Ultra low 1" threshold front curb for easy access. After underlayment & finished floor is installed virtually a flush entrance to the shower.
- Slip-resistant lightly textured slate floor maintains an easy to clean surface
- Warranty 10 Year Limited Residential/ 3 Year Commercial

## Stock Sized Specified Models

	Model No.	Length A	Width B	Height	Ctr C	Ctr D
<input type="checkbox"/>	SMFZS4836C	47.75"	35.5"	1.0"	23.875"	17.75
<input type="checkbox"/>	SMFZS6032C	60"	31.5"	1.0"	30"	15.75
<input type="checkbox"/>	SMFZS6036C	60"	35.5"	1.0"	30"	17.75
<input type="checkbox"/>	SMFZS6040C	60"	39.4"	1.0"	30"	19.70
<input type="checkbox"/>	SMFZS6332C*	63"	31.5"	1.0"	31.5"	15.75
<input type="checkbox"/>	SMFZS6336C*	63"	35.5"	1.0"	31.5"	17.75
<input type="checkbox"/>	SMFZS6736C*	67"	35.5"	1.0"	33.5"	17.75
<input type="checkbox"/>	SMFZS5140C	51.2"	39.4"	1.0"	25.6"	19.70
<input type="checkbox"/>	SMFZS6340C*	63"	39.4"	1.0"	31.5"	19.70
<input type="checkbox"/>	SMFZS7236C*	71.875"	35.5 "	1.0"	36.0"	17.75
<input type="checkbox"/>	SMFZS7940C*	78.75"	39.4 "	1.0"	39.4"	19.70

\* Meets ADA requirements.

## Custom Sized Specified Models (Specify Lgth, Depth)

can only be used as a Single or Double Threshold base if custom

	Model No.	Max. Lgth. A	Max. Lgth. B	Max. Depth A	Max. Depth B
<input type="checkbox"/>	SMCFZS4836C	47.75"	39.75"	35.5"	33.5"
<input type="checkbox"/>	SMCFZS6032C	60"	52"	31.5"	29.5"
<input type="checkbox"/>	SMCFZS6036C	60"	52"	35.5"	33.5"
<input type="checkbox"/>	SMCFZS6040C	60"	52"	39.4"	37.5"
<input type="checkbox"/>	SMCFZS6332C*	63"	55"	31.5"	29.5"
<input type="checkbox"/>	SMCFZS6336C*	63"	55"	35.5"	33.5"
<input type="checkbox"/>	SMCFZS6736C*	67"	59"	35.5"	33.5"
<input type="checkbox"/>	SMCFZS5140C	51.2"	43.25"	39.4"	37.5"
<input type="checkbox"/>	SMCFZS6340C*	63"	55"	39.4"	37.5"
<input type="checkbox"/>	SMCFZS7236C*	71.875"	63.875"	1.0"	34.5"
<input type="checkbox"/>	SMCFZS7940C*	78.75"	39.4 "	1.0"	39.4"

## To Be Specified: Color

<input type="checkbox"/>	31 White
<input type="checkbox"/>	32 Cameo
<input type="checkbox"/>	39 Grey
<input type="checkbox"/>	09 Black



Cameo 32 Black 09

## Codes/Standards

The specified model meets or exceeds the following:

ASTM E662 CSA B45.5/IAPMO Z124

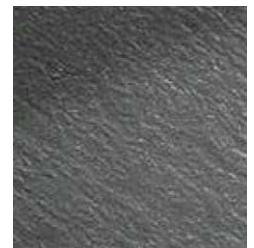
**Notes:** Install this product according to the installation instructions.



Modern low profile design with a slate look slip resistant texture.



Modern drain design for 32C and 36C Widths



Slate look slip resistant texture.



Drain design for 40C widths

## CUSTOMIZABLE BASE

**Note:** Bases can be built to accommodate unique sizes. Notches can also be cut from the bases to allow for columns in a corner.

Base can be built to custom sizes within certain limitations. Can be trimmed up to 4" in width from either side or up to 2" from depth. Base is designed to be used as a single, double or triple threshold in stock sizes and single or double threshold models in custom sizes

