

INSTALLATION INSTRUCTIONS

The manufacturer reserves the right to change the technical parameters and external characteristics of the product specified in this manual, if these changes do not affect the functionality.

Note: Detailed information is in accordance with the final product.

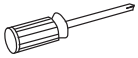


For users attention

- Do not disassemble the faucet main body, as it was assembled and fine-tuned to standard before leaving the factory;
- To avoid damage to the faucet, flush the water pipes before installation.
- After installation, make sure each joint safely sealed and does not leak.
- Using conditions: working pressure at 0.5 - 1.0 MPa (including cold and hot water), the water temperature should be at least 4 °C and not more than 90 °C.
- Make sure the hot and cold water pipes are connected correctly: if you stand in front, the hot water pipe must be connected to the left and the pipe cold water - to the right.

Tool

The tools below are required to complete the installation. Some may not be needed depending on the model of the faucet that you are installing. For additional information, check with your local hardware store on the requirements for your installation. (NOT PROVIDED)



Philips Screwdriver



Thread Seal Tape



Flashlight



Hexagon wrench



Pliers



Adjustable Wrench



Safety Glasses

Thermostatic valve

Conditions of use:

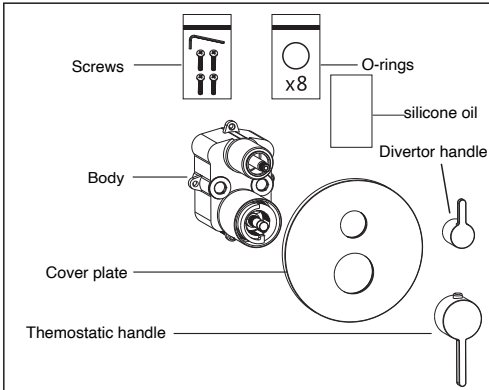
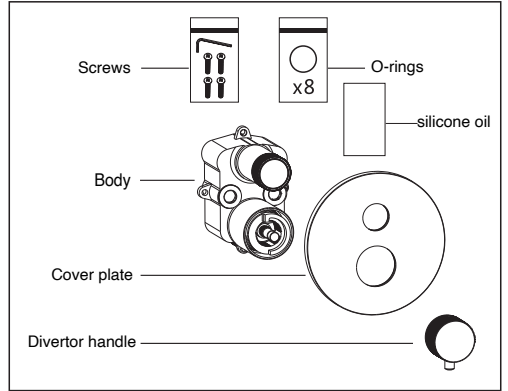
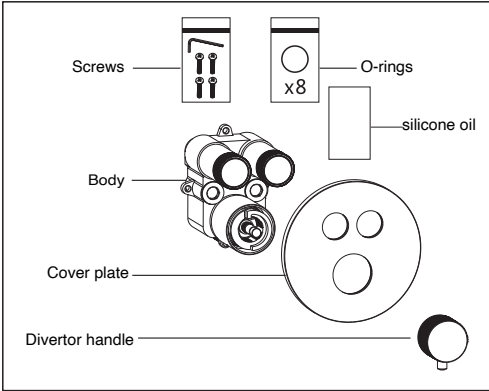
- Water pressure: 0.05MPa~0.5MPa, if the water pressure is lower than 0.05MPa, it is recommended to install a booster pump at the water supply end, if more than 0.5MPa should be installed pressure reducing valve
 - Cold water temperature :4°C-25°C(recommended 15°C), hot water temperature: 55°C-85°C (recommended 55-65°C)
 - The using ambient temperature is above 0°C, if it is lower than 0°C, the product may appear deformation, freezing and cracking.
- After installing the faucet in the new house before moving in, the owner must be required to close the main water valve, open the faucets & showers to empty the residual water of the pipeline, and then close the faucet to prevent water seepage accidents caused by freezing crack pipes or faucets below zero. After the product is used, the indoor environment should be kept above 0°C.

Installation result check:

- Check and make sure all connections are tight and that the switch button is in the off position
- Open the hot and cold water supply pipe, check that the ball valve is open, and whether there is leakage at each connection! Check that the product is installed correctly.
- Remove the top shower head and hand shower, open the handle, switch the hot and cold water and each function, and let the water flow from each outlet to clean clutter. Then close the handle and reinstall the shower heads.

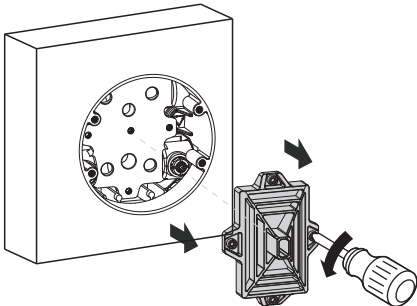
Round & Square 1&2-Function Thermostatic Push Button Shower Valve

Parts List

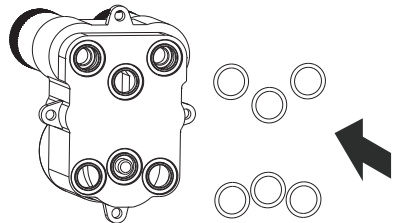


Installation Manual

1. Remove the water test plate from the Union Box using a screwdriver

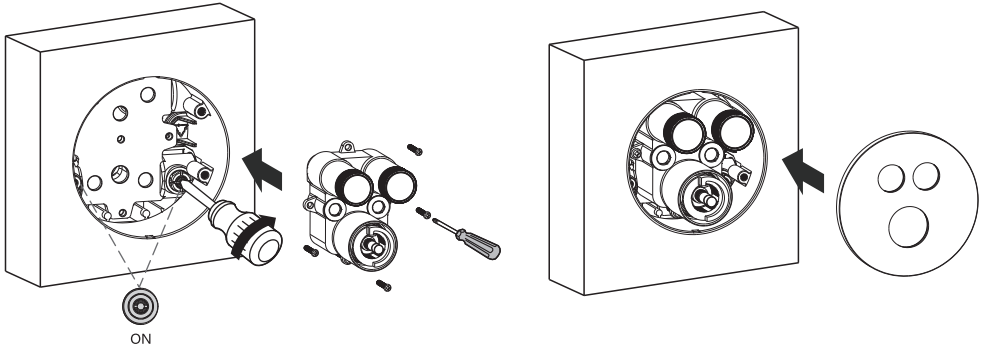


2. Fit 6pcs O-rings into grooves at the backside of the body.

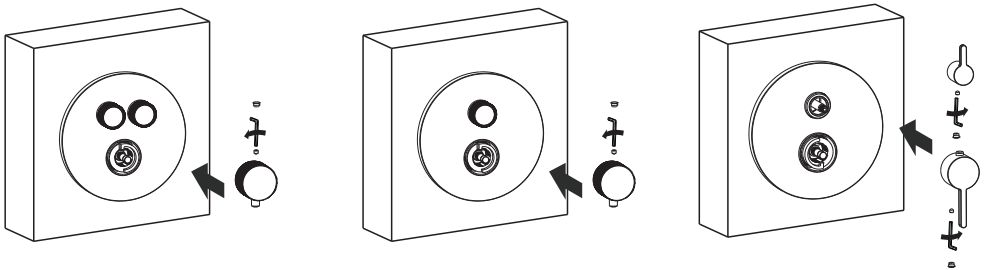


3. Put the body into the wall, tight the screws at clockwise, then open the water valve, water in, to check whether leakage happen.

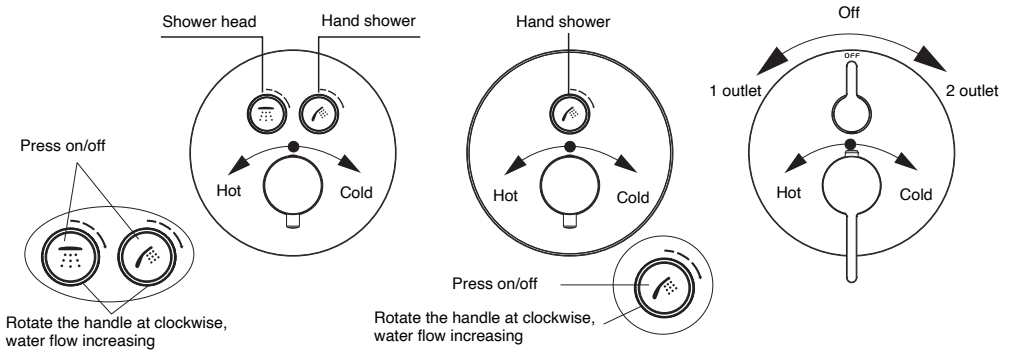
4. Install the cover plate to the wall. Same action for square valve



5. Step 1~4 was the installation for the body, below is the installation for the handle.

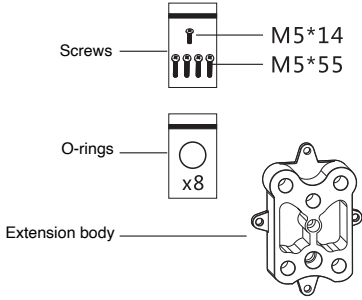


Product function

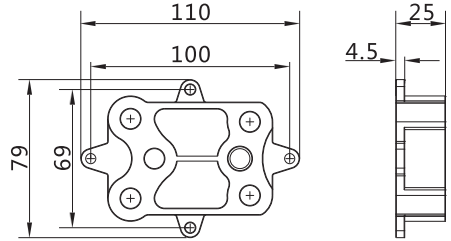


Apolegamic Extension Kit for iBox of thermostatic valve

Parts list



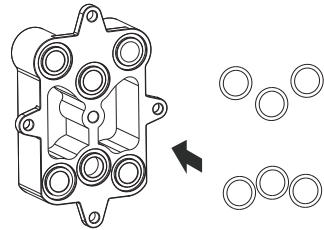
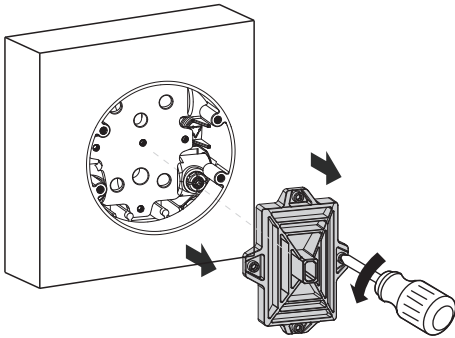
Dimension



Installation Manual

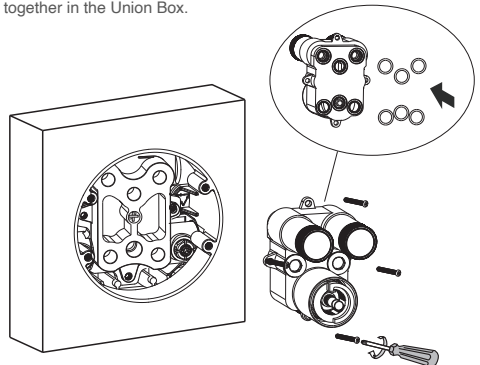
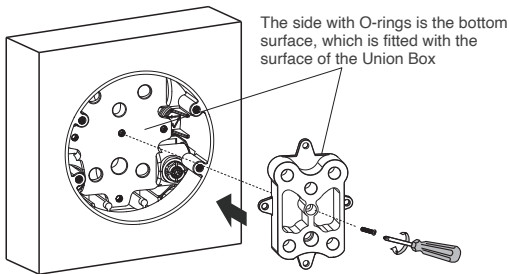
1. Remove the water test plate from the Union Box using a screwdriver

2. Fit 6pcs O-rings into grooves at the bottom of the extension body.



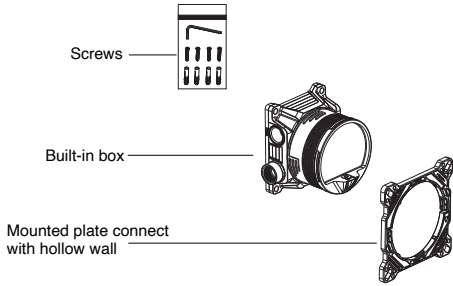
3. Use the short screw (M5*14), to fix the middle hole of extension body.

4. Use 4pcs of long screw (M5*55) to secure the upper body and the extension body together in the Union Box.



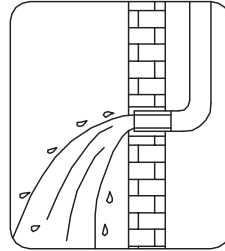
Apolegamic iBox Universal Rough of thermostatic valve(SOLID WALL)

Parts list

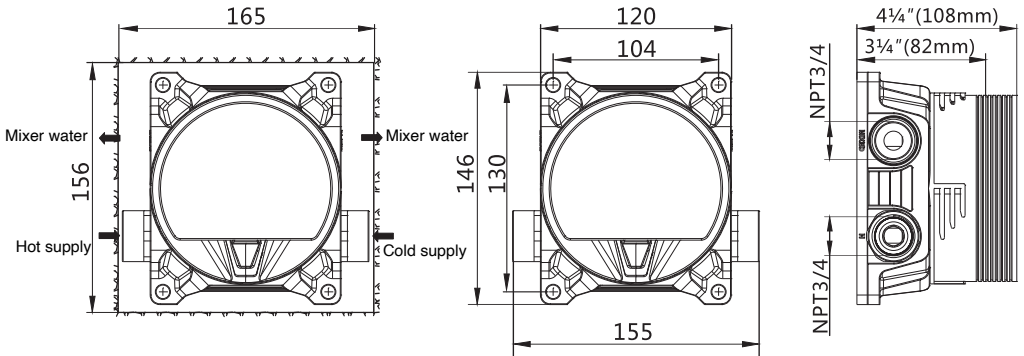


Installation steps

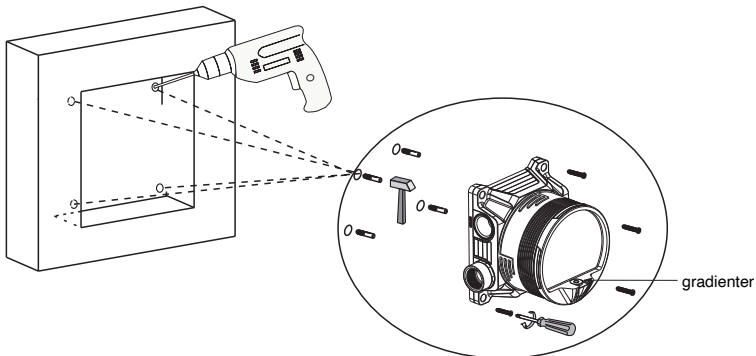
1. Before installation, ensure that all feed lines are clear of debris and on/off valve is present.



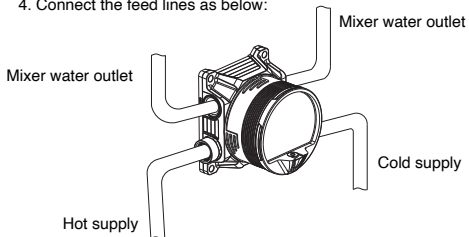
2. Suggest groove size is 165mm length x 156mm width, and depth in around 82~108mm, according to the size of built-in box.



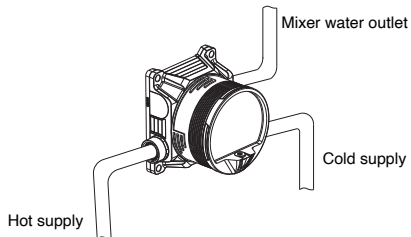
3. Drill 4 holes inside the wall, insert expansion screws sleeve, set into built-in box, tight the screws at clockwise, ensure the box balance by check the gradienter



4. Connect the feed lines as below:

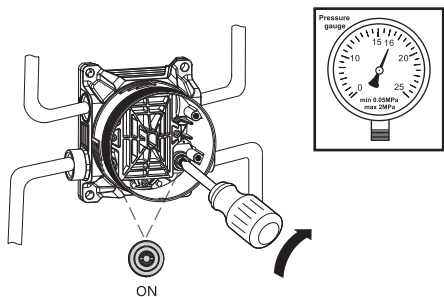


Double function

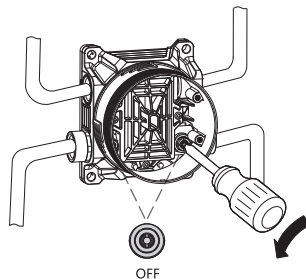


Single function

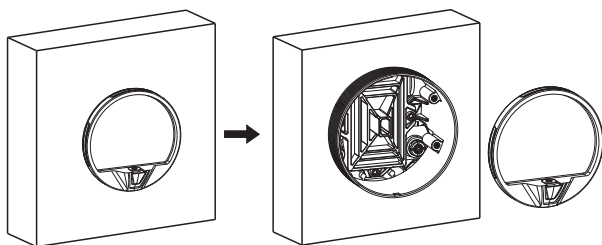
5. Take off the cover of built-in box, water in, ensure the connected position did not leak.



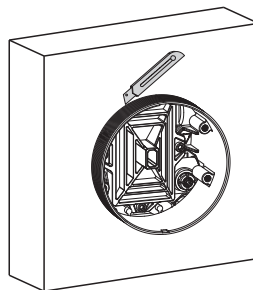
6. Turn off the water valve after ensure no leakage.



7. Close the built-in box with the cover, grouting and tile fixing, after finished, take off the cover.



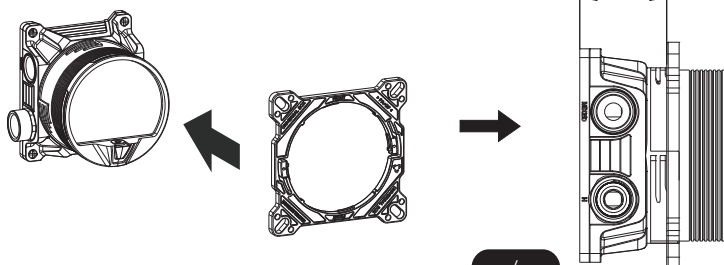
8. Trim off the part of built-in box which exceed the wall, if level to the wall, no need to trim the box.



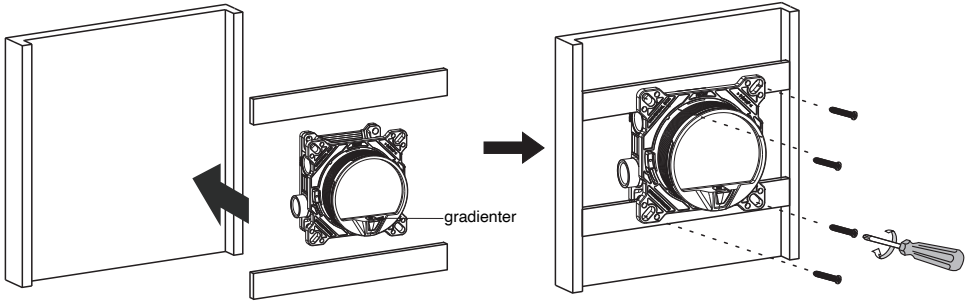
Apolegamic iBox Universal Rough of thermostatic valve(HOLLOW WALL)

1. Combine the built-in box and mounted plate, the adjustment range is 46mm/52.5mm/59mm

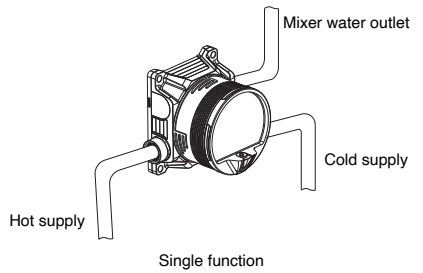
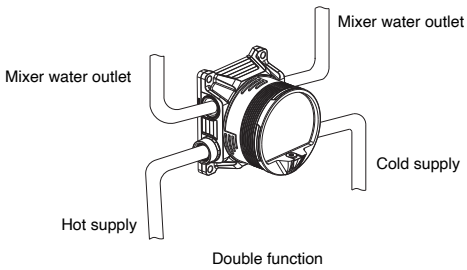
46mm/52.5mm/59mm



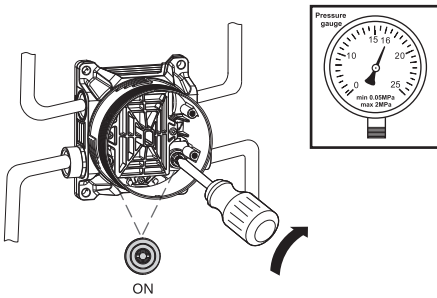
2. Set into built-in box, tight the screws at clockwise, ensure the box balance by check the gradienter



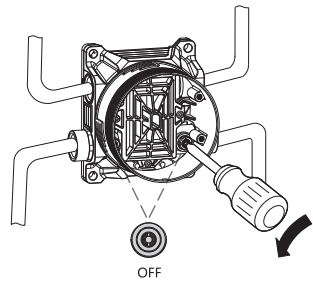
3. Connect the feed lines as below:



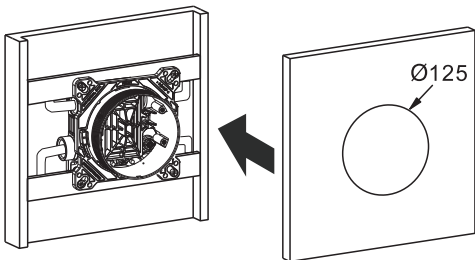
4. Take off the cover of built-in box, water in, ensure the connected position did not leak.



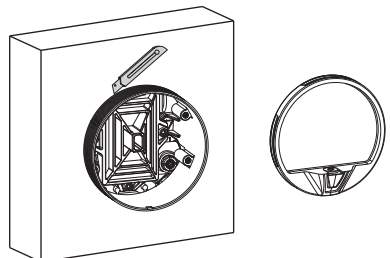
5. Turn off the water valve after ensure no leakage.



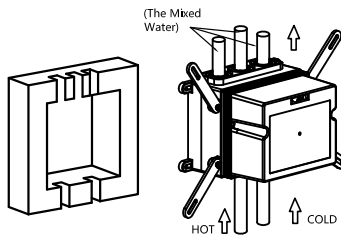
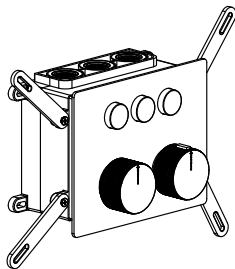
6. Trepanning on the board, set into the built-in box.



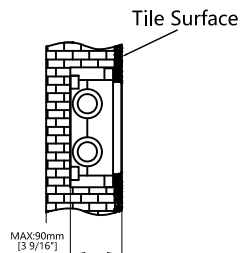
7. Trim off the part of built-in box which exceed the wall, if level to the wall, no need to trim the box.



Square 3-Function Thermostatic Push Button Shower Valve

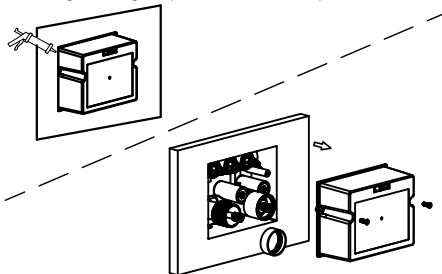


1. Confirm the install place of shower valve, connect the hot water on left side and cold water on right side (size for pre-install box: 160*220*90mm).

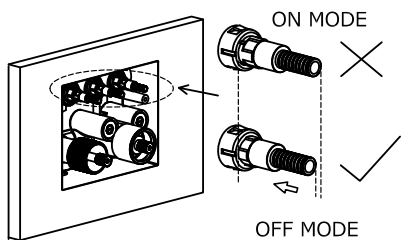


2. Laid the shower valve into the solid wall, the suitable depth is 90mm.

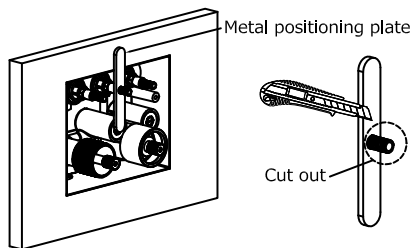
3. Use glue along the pre-install box to keep it stable.



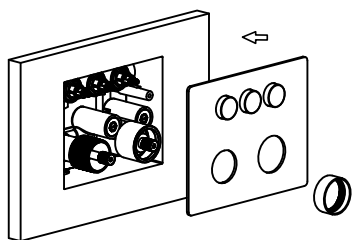
4. Loosen the screw and remove protect cover



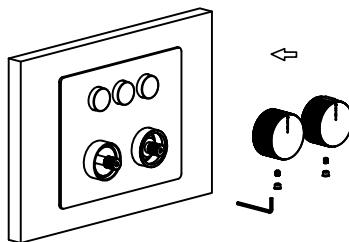
5. Set the three switches to off mode,



6. Use the metal positioning plate to flatten the exterior wall, and then cut out the extension part with a knife.

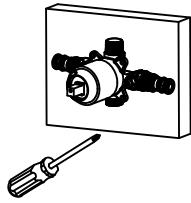


7. Lock the deck plate into the body and ceiling to the wall.

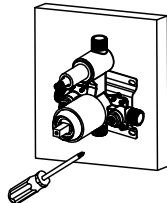


8. Install the handles by hexagonal wrench, then install the red and blue color button.

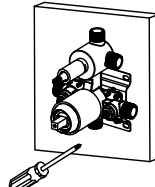
Round/Square Single/Multi Function Pressure Balance Valve



Single function

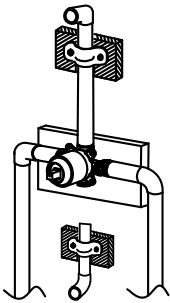


Double function

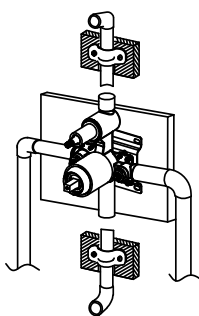


Multi- function

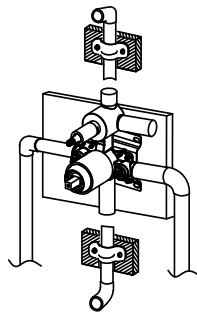
1. Confirm the installed place of the pressure balance valve and fixed on the wood block.



Single function

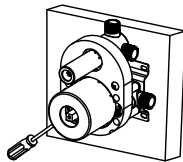


Double function

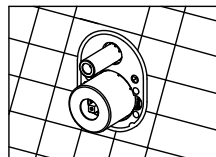


Multi- function

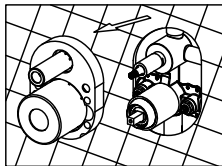
2. Connect the hot&cold inlet tube and outlet tube, then make sure the tube fix stable on the wooden wall.



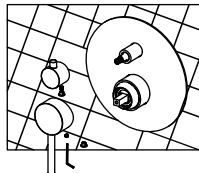
3. Screw in the oval protective cover over the pressure valve and pipes.



4. Cut the bathroom tile wall according to the size and shape of the protective cover (about 5mm bigger than the protective cover from each side). Please put the tile outside the wooden block.

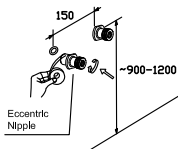
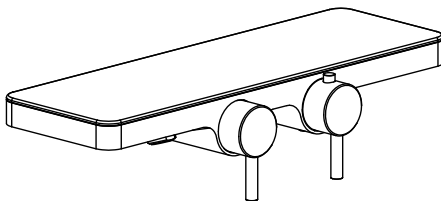
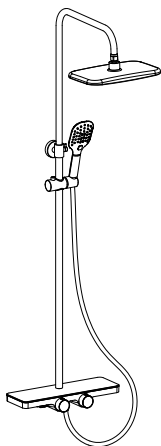


5. Loosen the screw and remove protect cover.

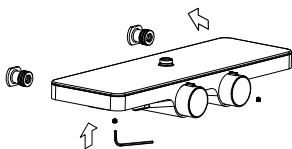


6. Lock the face plate into the body and cling to the wall. Put on the handle, then tighten the screw.

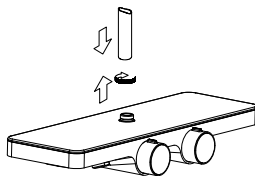
Therm 3-Function Thermostatic Mixer



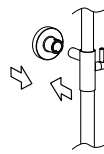
Step 1
As shown, install the accessories and attach the tape.



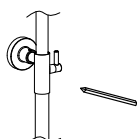
Step 2
Install the main body and tighten the screw.



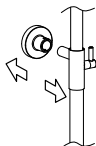
Step 3
Install the riser in the faucet.



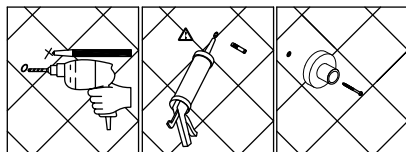
Step 4
Install the mounting piece on the shower arm.



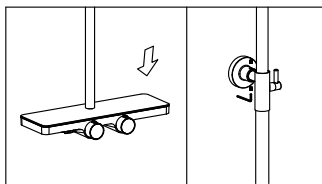
Step 5
Make sure the riser is level, mark the position of the screw holes.



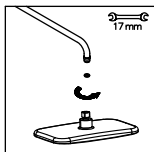
Step 6
Remove the riser and the mounting piece.



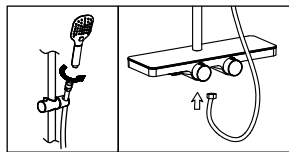
Step 7
Drill the screw holes and install the anchors. Install the mounting piece and mounting piece seal.



Step 8
Install the riser on the faucet, tighten the screw.

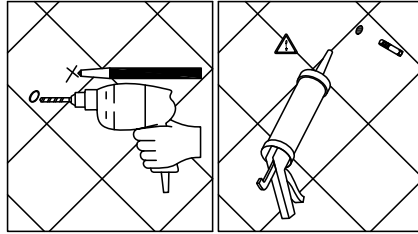
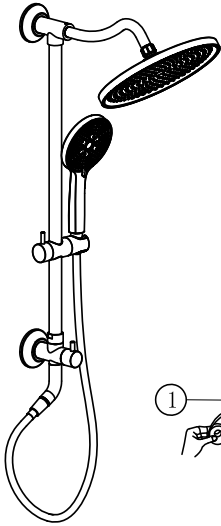


Step 9
Install the shower rain head.

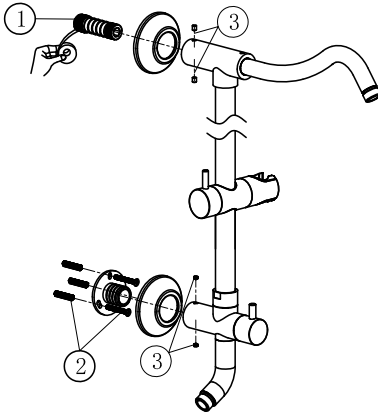


Step 10
Place the hose washer in the short hose end connection. Connect this end of the hose to the faucet. Place the screen washer in the long hose end connection. Install the handshower on this end of the hose. Rest the handshower in the holder.

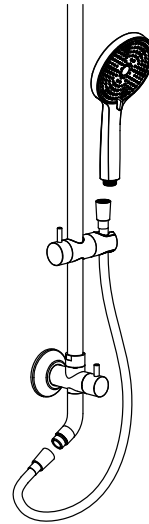
Shower Set



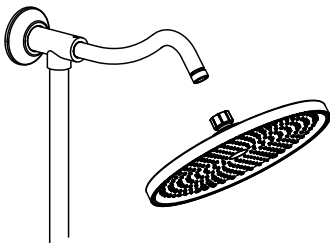
Step 1
Drill the screw holes and install the anchors.



Step 2
01. Warp the thread of spout with teflon tape (ensure it must warp clockwise). Screw-in to the inlet pipe inside the wall.
02. Use tapping screw to fix holder on the wall.
03. Fixed the hex screw.



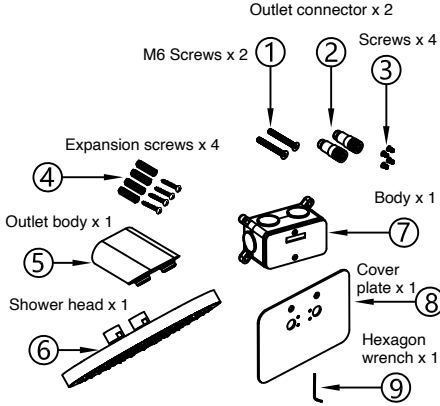
Step 3
Connect the hose with hand shower, the other outside. Insert connector to the pipe which outside the wall.



Step 4
Install the shower rain head.

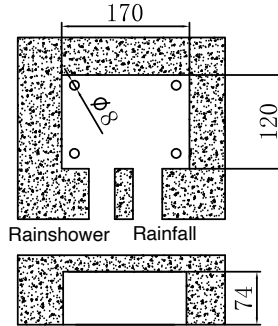
Round 2F Shower Head

Parts list

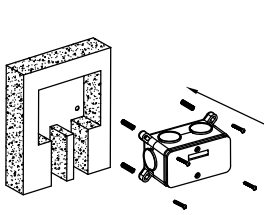


Installation steps

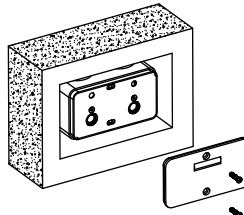
Units:mm



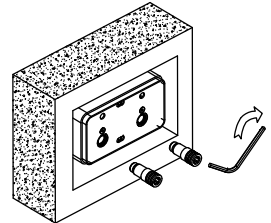
1. Groove the wall as the suggested dimension, drill the screw hole inside the wall.



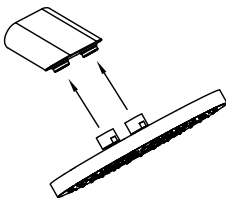
2. Insert the expansion screws into the screw holes, and set the body in with the screws, ensure the body keeps balance, grouting, avoid the cement spill on the brass parts.



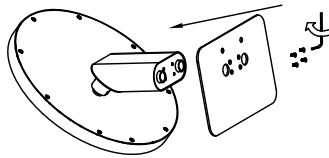
3. Finished body inserted, please take apart the protection cover.



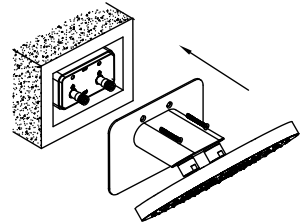
4. Connect the outlet connector with the body by the hexagon wrench.



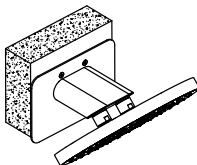
5. Connect the shower head on the outlet body by tightly the screws.



6. Fix the cover plate with the outlet body with screws.



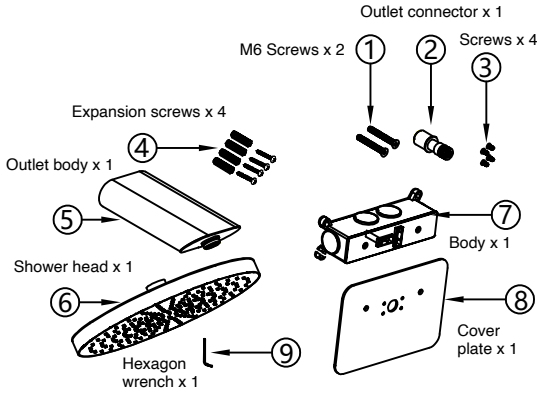
7. After installation, please turn on the shower head to check if the leakage happens.



7. After installation, please turn on the shower head to check if the leakage happens.

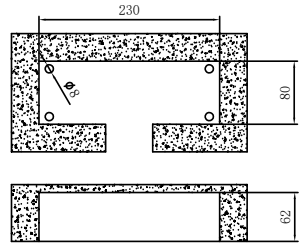
Round 1F Shower Head

Parts list

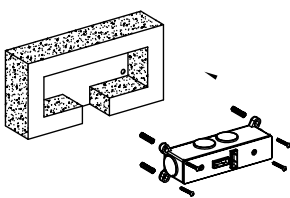


Installation steps

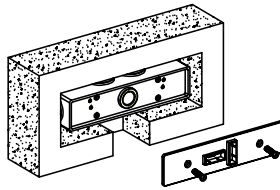
Units:mm



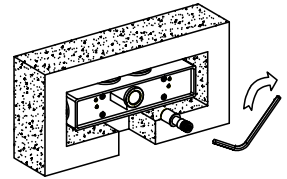
1. Groove the wall as the suggested dimension, drill the screw hole inside the wall.



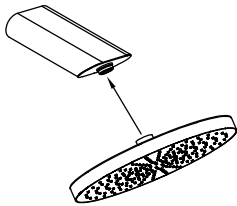
2. Insert the expansion screws into the screw holes, and set the body in with the screws, ensure the body keeps balance, grouting, avoid the cement spill on the brass parts.



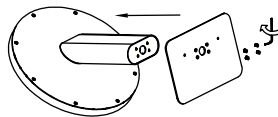
3. Finished body inserted, please take apart the protection cover.



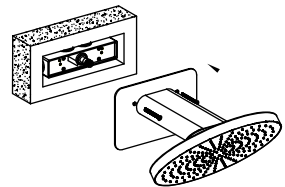
4. Connect the outlet connector with the body by the hexagon wrench.



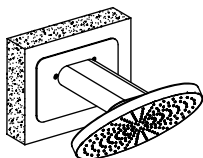
5. Connect the shower head on the outlet body by tightly the screws.



5. Fix the cover plate with the outlet body with screws.

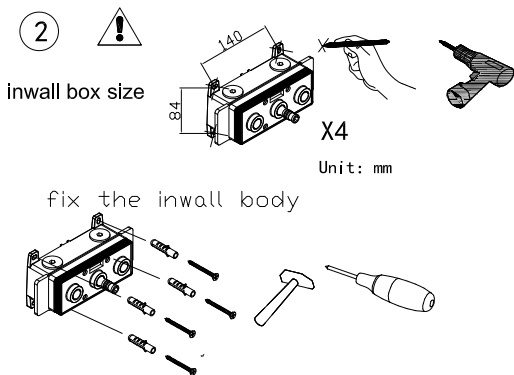
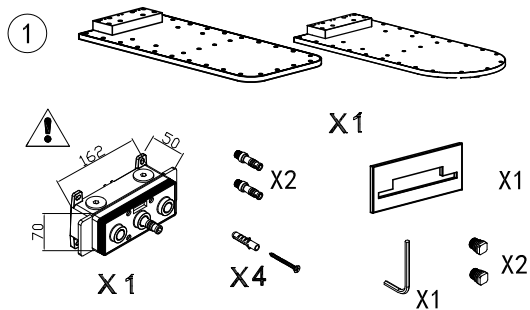


6. Connect the shower head with the body by tightly the screws.

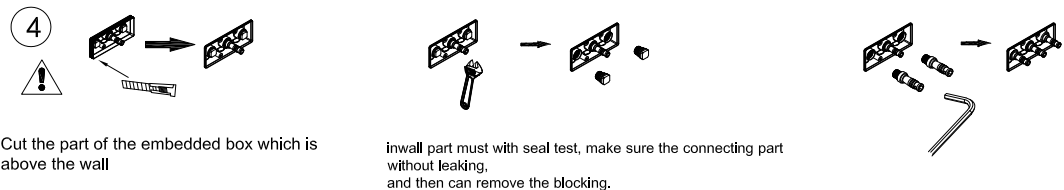
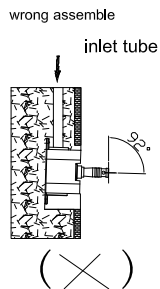
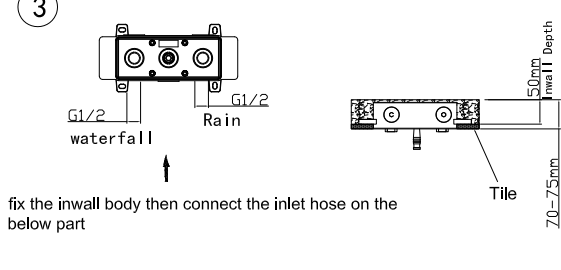


7. After installation, please turn on the shower head to check if the leakage happen.

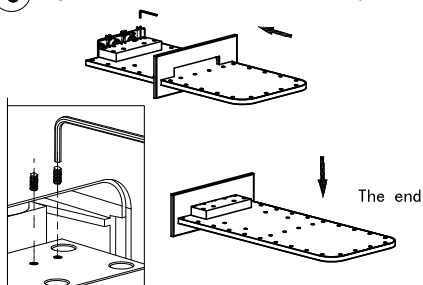
Round & Square Rain Shower Head



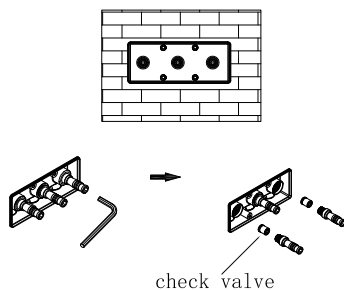
③ confirm without leaking, and then finish the tile face side.



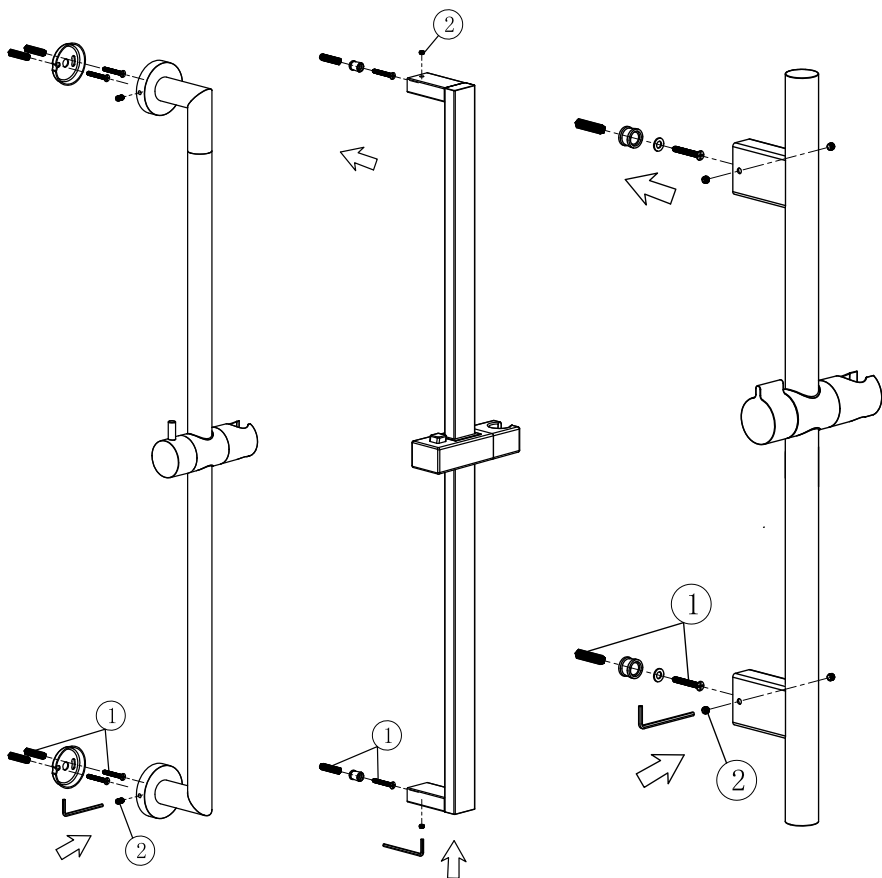
⑤ Tighten the screw to fixed the body



⑥ Protect: follow the shown to clear the impurity of the inwall body inside



Sliding Bar



Installation:

01. Use tapping screw to fix holder on the wall.
02. Then fixed the hex screw.

Product care

- It is recommended to use special products for chrome surfaces or soapy water to clean the surface.
- Wash off dirt with a soft sponge without rubbing. Dry the surface with a soft cloth.
- Do not use abrasive materials, rough paper or sharp objects.
- Do not use detergents containing acids or solvents or means for removing limescale.

FAUCET TROUBLE SHOOTING:

Problem	Possible Cause	Corrective Action
Water does not shut off completely.	1.O-ring is not seated correctly or worn. 2.Cartridge may be defective.	1.Reseat or replace O-ring. 2.Replace cartridge
Leaks at waterline connection.	1.Worn or broken washer.	1.Replace washer.
Leaks from handle.	1.Cartridge may come loose. 2.Cartridge may be defective.	1.Reseat cartridge tight. 2.Replace cartridge.
Leaks at hose connection.	1.Hose connection is loose.	1.Tighten hose. 2.Replace hose.
Leaks at shower valve connection	1.Connection may come loose or not sealed completely. 2.Defective shower valve inlet or outlet connector.	1.Check connections. 2.Replace valve body.
Diverter knob does not work.	1.Diverter cartridge may be defective.	1.Replace cartridge.
Low flow	1.Check for water pressure problems. 2.Aerator may be dirty or clogged.	1.Clean or replace the aerator. 2.Remove water flow restrictor if available. 3.Install booster or pump (if applicable).