

Instruction Manual

Series: **SA9007HD**

Attention: Important Safety Information



Please read these instructions carefully before attempting to install this product. It is advisable to keep these instructions in a safe place for further reference. **We recommend that you consult a qualified electrician.** These products must not be modified; if any modifications are made, it may invalidate the warranty and may render the product unsafe. These LED lights operate on low voltage (24V). **Do not wire the individual LED light fixtures directly to line power. This product is for indoor use only. Keep out of moisture and use only in dry rooms.**

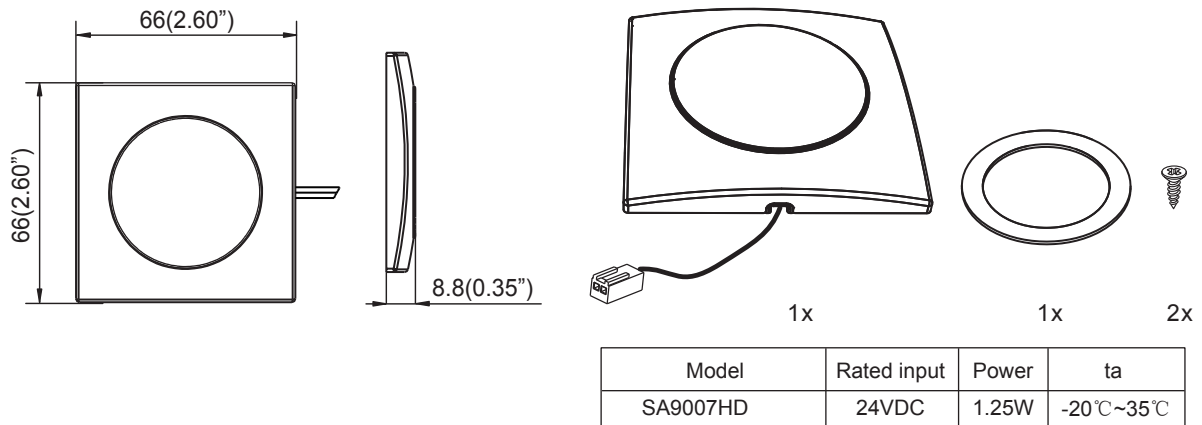
- CAUTION : To reduce the risk of fire, electric shock, or injury to persons:
- Use only insulated staples or plastic ties to secure cords;
 - Route and secure cords so that they will not be pinched or damaged when the cabinet is pushed to the wall;
 - Position the portable cabinet light with respect to the cabinet so the lamp replacement markings are able to read during re-lamping; and
 - Not intended for recessed installation in ceilings, or soffits."

The low voltage portable cabinet light may be installed inside or under a kitchen cabinet or other built-in furniture when:

- The low voltage Class 2 power supply is located outside the cabinet and is not concealed; and
- The line voltage power supply cord is not concealed or run through openings in the cabinet, walls, ceilings, or floors. This requirement does not apply to the wiring between the cabinet light and the power unit.

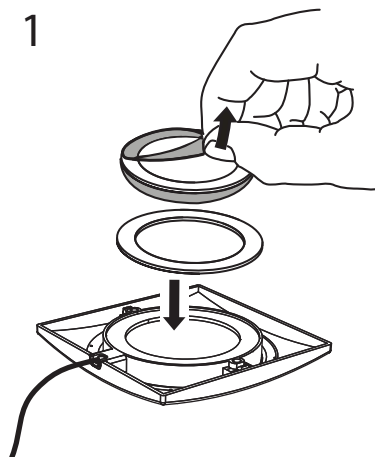
The National Electrical Code (NEC) does not permit cords to be concealed where damage to insulation may go unnoticed. To prevent fire danger, do not run cord behind walls, ceilings, soffits, or cabinets where it may be inaccessible for examination. Cords should be visually examined periodically and immediately replaced when any damage is noted.

Dimension in mm (inches)

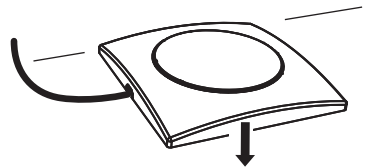


①

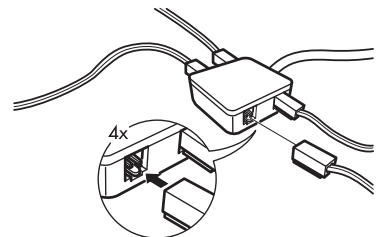
1



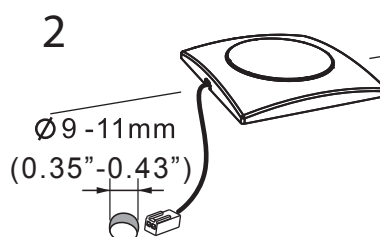
2



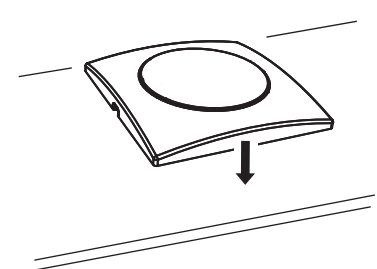
3



2

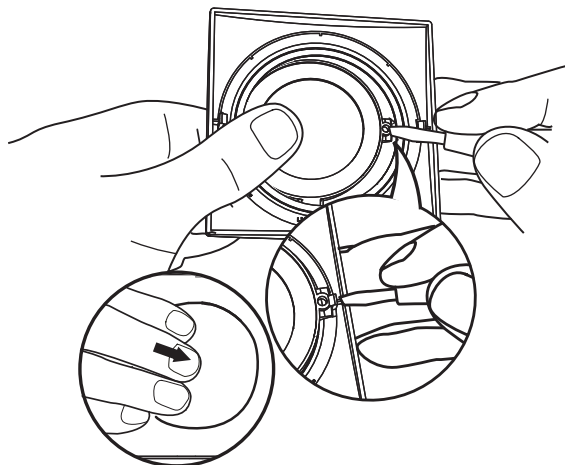


3

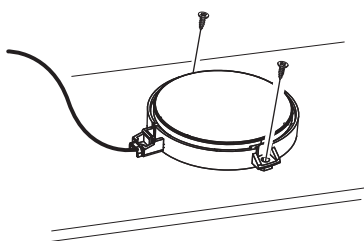




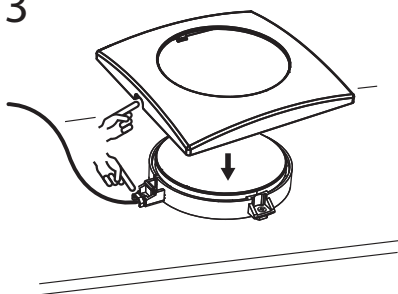
1



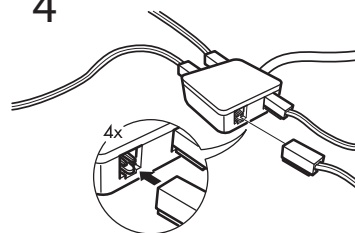
2



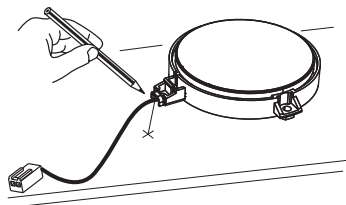
3



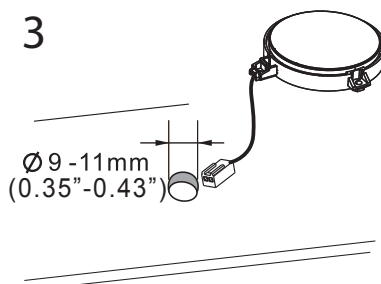
4



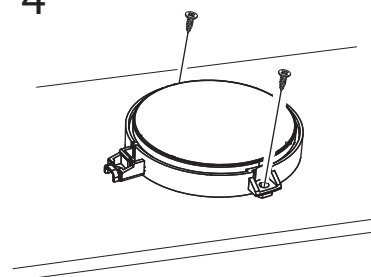
2



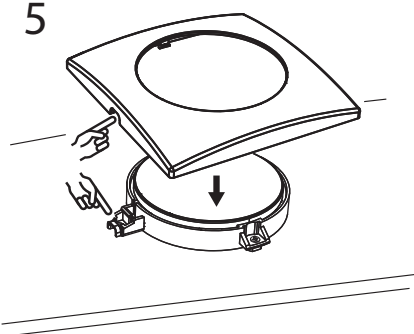
3



4



5



6

