



**CHRISTOPHER**  
**MODEL 527 SIPHONIC DUAL FLUSH**  
 TWO-PIECE CLOSED-COUPLED, ELONGATED BOWL,  
 12" ROUGH-IN, GRAVITY FEED  
 ELONGATED TOILET WITH SECONDARY DRAIN SYSTEM  
 VITREOUS CHINA

**HET-WATER SENSE LISTED**  
**ELONGATED TOILET WITH SECONDARY FLUSH SYSTEM**  
**1.1 GALLON/4.1 LITER PARTIAL FLUSH**  
**1.6 GALLON/6.0 LITER FULL FLUSH**

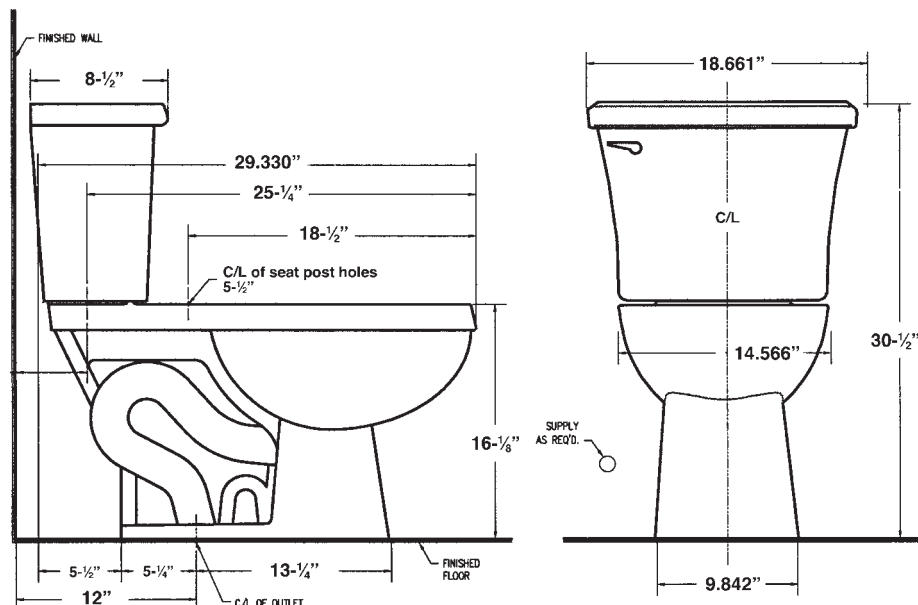
**FEATURES:**

- Elongated bowl
- Vitreous china
- 12" rough-in
- **Fluidmaster** Siphonic Dual Flush System  
*Pull lever down for 1.6 gpf; lever up for 1.1 gpf*
- **Exclusive Penguin Protection Technology:**  
*Primary & Secondary overflow drain system protects against overflows*
- **Comfort ADA height**  
*New taller bowl design meets ADA codes*
- **1000 gram MaP flushing performance**  
*With a gravity flushing system*
- Left hand trip lever
- Fully glazed 2" trapway

**APPLICABLE CODES & STANDARDS:**

• ASME A112.19.2 • IGC 252-07 • CSA B45-02 (Supplement No. 1-2004) • ADA Compliant

Color	Bowl Model No.	Tank Model No.	Combination Model No.
<input type="checkbox"/> White	TB-527-01	TT-527-01	TBT-527-01
<input type="checkbox"/> Biscuit	TB-527-08	TT-527-08	TBT-527-08



**SIDE CUT-A-WAY SHOWING SECONDARY TRAP HT**

**NOTES:**

THIS TOILET IS DESIGNED TO ROUGH-IN AT A MINIMUM DIMENSION OF 305MM (12") FROM FINISHED WALL TO C/L OF OUTLET. SUPPLY NOT INCLUDED WITH FIXTURE AND MUST BE ORDERED SEPARATELY.

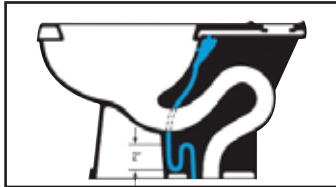
\* DIMENSION SHOWN FOR LOCATION OF SUPPLY IS SUGGESTED. FOR ADDITIONAL INFORMATION REFER TO INSTALLATION INSTRUCTIONS SUPPLIED.

**Transolid, Div. • P.O. Box 30 • Warren, OH 44483-0030**  
**(800) 766-2452 • www.transolid.com**





## Penguin Protection Technology® Overflow Protection



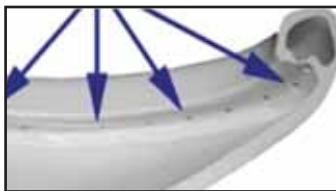
### OVERFLOW PROTECTION AND HOW IT WORKS

Transolid toilets with Penguin technology features a toilet design with a secondary drain system that allows the contents to drain through a separate drain line in the event of a clog in the main trap. This systems virtually eliminates toilet overflows.



### PRIMARY OVERFLOW

If a blockage occurs and the toilet clogs, water will continue to rise until it reaches the primary overflow holes in the back of the bowl. At this point, the water drains through the secondary system bypassing the main trap and drains directly into the sanitary main.



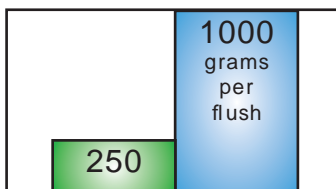
### SECONDARY OVERFLOW *The second level of protection*

In the unlikely event that the primary overflow holes are obstructed, the water will continue to rise until it enters the holes under the bowl rim. The water travels through a hidden inlet into the secondary drain system which drains into the sanitary main, once again protecting from an overflow.



### CONVENTIONAL INSTALLATION

Simply place the wax ring on the bottom of the bowl then set the bowl as normal. There is no need to re-pipe or replace any of the existing plumbing system. After you have installed the new Transolid toilet relax, knowing that you are protected.



### MaP MAXIMUM PERFORMANCE

Transolid toilets perform at 1000 grams per flush. The highest rating of any two-piece toilet. The average amount of human solid waste is equivalent to 250 grams per flush. The Transolid toilet provides 4x this capacity, your assurance of solid performance.



### FLUIDMASTER INTEGRITY *The Industries Most Trusted Name*

The most popular name in toilet care with the highest quality performance. Transolid toilets with Fluidmaster tank components provide the highest level of performance providing years of service.

## Industry Awards



## Industry Approvals

