

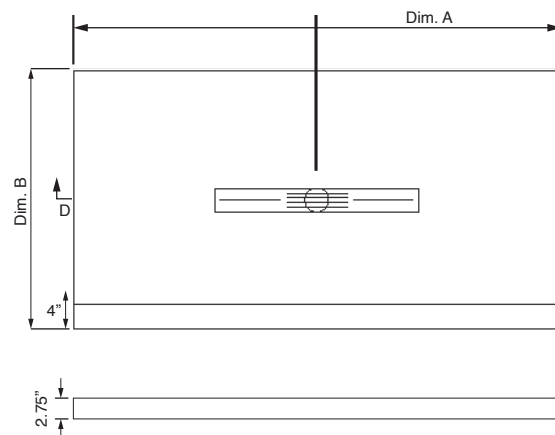
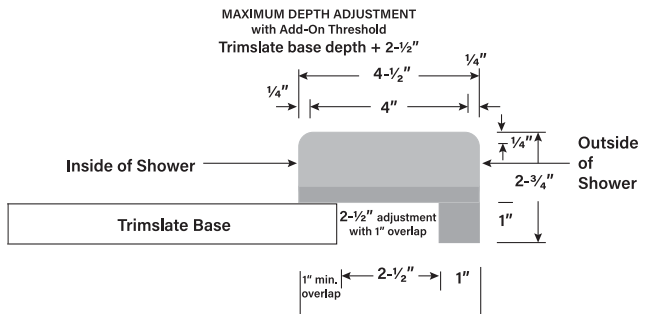
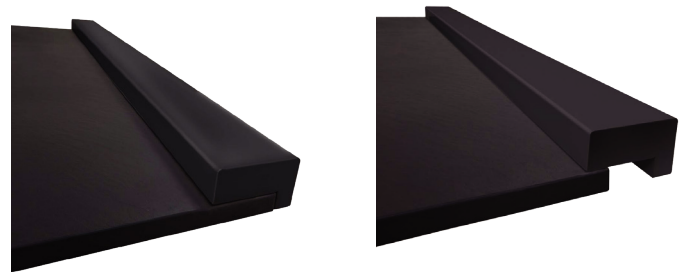
Features

- Heavy Duty SMC Sheet Molding Compound Material
- Trimslate shower bases with our unique adjustable depth threshold.
- Maximum depth can be adjusted by up to 2-1/2" without any trimming of the base.
- Trimslate bases can also be customized in the field to fit your space. Trim up to 4" in width from either side opposite drain or up to 2" in depth away from drain.
- For bases 60" in length or less, a 60" add on trimmable threshold is included.
- For longer bases, an 80" long add on trimmable threshold is supplied.
- The threshold has a 4" wide flat surface to accommodate shower doors.
- SMC color-matched drain cover conceals a conventional 2" shower drain (not supplied).
- Modern stainless steel drain cover conceals a conventional 2" shower drain (not supplied). Color-matched cover for FZST5140C, FZST6040C, FZST6340C, and FZST7940C.
- The slate floor has a lightly textured and slip-resistant surface that makes it safe, yet remains easy to clean.
- 10 Year Limited Residential / 3 Year Commercial Warranty



Stock Sized Specified Models

	Model No.	Length A	Min Width B	Max Width B	Height
<input type="checkbox"/>	FZST4836C	47.2"	36.5"	39"	2.75"
<input type="checkbox"/>	FZST5140C	51.2"	40.5"	43"	2.75"
<input type="checkbox"/>	FZST6032C	59.1"	32.5"	35"	2.75"
<input type="checkbox"/>	FZST6036C	59.1"	36.5"	39"	2.75"
<input type="checkbox"/>	FZST6040C	59.1"	40.5"	43"	2.75"
<input type="checkbox"/>	FZST6042C	59.1"	42.5"	45"	2.75"
<input type="checkbox"/>	FZST6048C	59.1"	48.5"	51"	2.75"
<input type="checkbox"/>	FZST6332C	63"	32.5"	35"	2.75"
<input type="checkbox"/>	FZST6336C	63"	36.5"	39"	2.75"
<input type="checkbox"/>	FZST6340C	63"	40.5"	43"	2.75"
<input type="checkbox"/>	FZST6642C	64.9"	42.5"	45"	2.75"
<input type="checkbox"/>	FZST6648C	64.9"	48.5"	51"	2.75"
<input type="checkbox"/>	FZST6736C	67"	36.5"	39"	2.75"
<input type="checkbox"/>	FZST7236C	70.9"	36.5"	39"	2.75"
<input type="checkbox"/>	FZST7242C	70.9"	42.5"	45"	2.75"
<input type="checkbox"/>	FZST7248C	70.9"	48.5"	51"	2.75"
<input type="checkbox"/>	FZST7940C	78.7"	40.5"	43"	2.75"



To Be Specified: Color

<input type="checkbox"/>	31 White		White 31		Dk Grey 40
<input type="checkbox"/>	32 Cameo		Cameo 32		Black 09
<input type="checkbox"/>	40 Dark Grey				
<input type="checkbox"/>	09 Black				

Meets or Exceeds the Following Specification

• ASME A112.18.1 / CSA B125.125.1-11

• IGC 154-2012 • cUPC® • IAPMO