

FEATURES

- Vitreous china vanity top features a modern thin 22mm (55⁷/₆₄" edge.
- Vitreous china integral rectangular shape bowl.
- Top includes 1 center faucet hole drilling or faucet holes to accommodate 4-inch (101.6mm) centerset faucet or 8-inch (203.2mm) widespread faucet. Order vanity top with preferred hole drillings.
- Rear overflow.
- 5 Year Limited Residential Warranty
1 Year Commercial Warranty

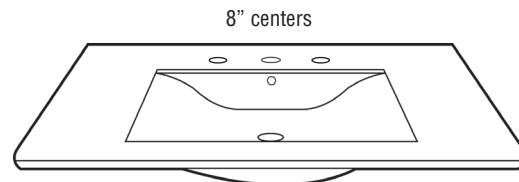
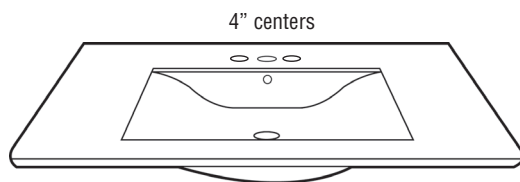
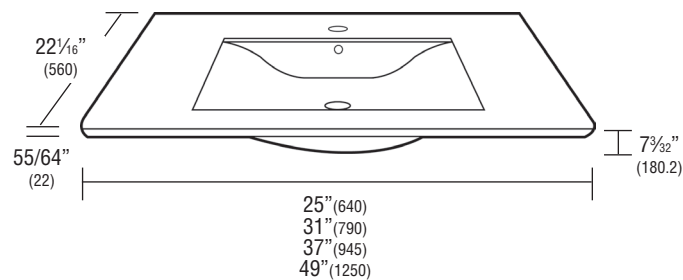
COLOR

- White



Specified Model

Model No.			Length	Width	Height			
Center Hole	4"cc	8"cc						
THIN EDGE VANITY TOP with integral bowl								
<input type="checkbox"/>	TL-1691	<input type="checkbox"/>	TL-1694	<input type="checkbox"/>	TL-1698	25 ³ / ₁₆ "	22 ¹ / ₁₆ "	7 ³ / ₃₂ "
<input type="checkbox"/>	TL-1701	<input type="checkbox"/>	TL-1704	<input type="checkbox"/>	TL-1708	31 ¹ / ₈ "	22 ¹ / ₁₆ "	7 ³ / ₃₂ "
<input type="checkbox"/>	TL-1721	<input type="checkbox"/>	TL-1724	<input type="checkbox"/>	TL-1728	37 ³ / ₁₆ "	22 ¹ / ₁₆ "	7 ³ / ₃₂ "
<input type="checkbox"/>	TL-1731	<input type="checkbox"/>	TL-1734	<input type="checkbox"/>	TL-1738	49 ³ / ₁₆ "	22 ¹ / ₁₆ "	7 ³ / ₃₂ "



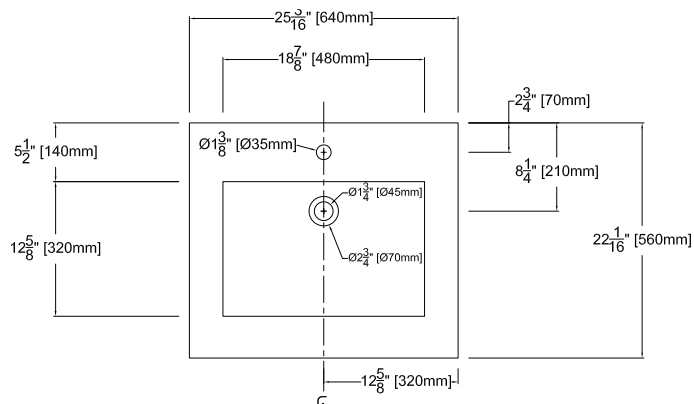
NOTE: See back for more detailed dimensions

Compliance Certifications -

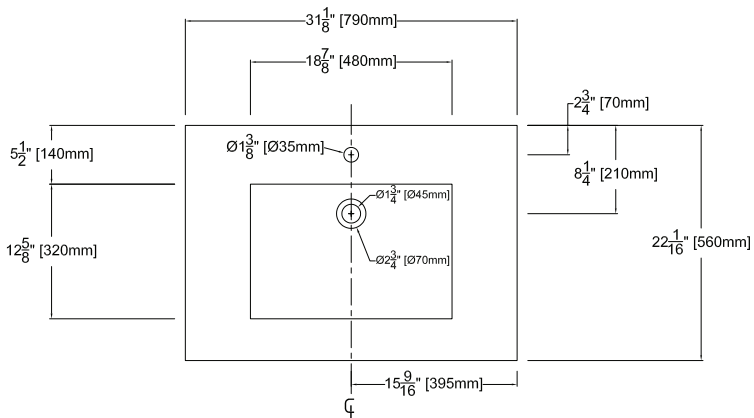
Meets or Exceeds the Following Specifications

- ASME A112.19.2M-1998
- Canadian Uniform Plumbing Code 2002
- UPC®

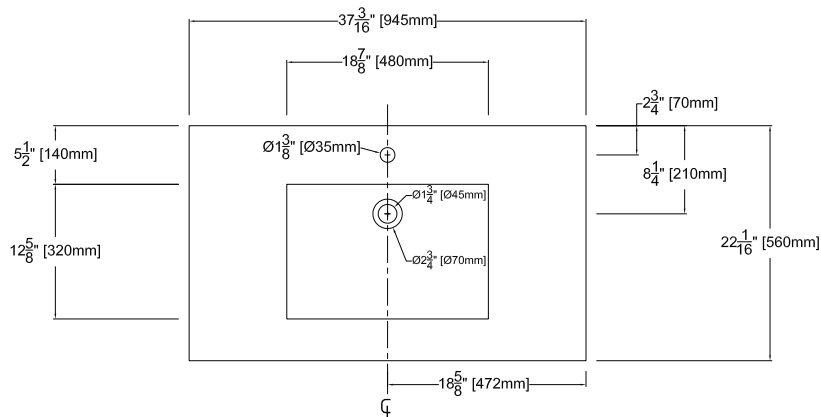
TL-1691 25" x 22"



TL-1701 31" x 22"



TL-1721 37" x 22"



TL-1731 49" x 22"

